

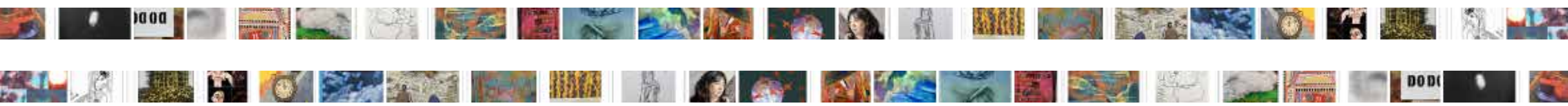
**LAUNCHING 29 MAY
AND EVERYDAY UNTIL 21 JUNE**

RIVERSIDE ARTISTS GROUP PRESENTS ON INSTAGRAM

MAYDAY MAYDAY

24 ARTISTS RESPOND

@RIVERSIDEARTISTSGROUP



Twenty four artists from Riverside Artists Group (RAG) present 'Mayday Mayday' from 29 May to 21 June 2023. Each day a new image is shown on RAG's Instagram page: @riversideartistsgroup

Do not miss this show, 'good as a daily nip of coffee' as one viewer said of RAG's last Instagram exhibition, the successful Winter Calendar II. This time our artists were asked to give a two-word title to echo the theme and to explain their work. Also watch the hashtags for relevant connections.

The theme of Mayday Mayday references the international distress call but in deference to that call, this has two Maydays whereas the genuine call for aid has three. 'Mayday' was conceived in the early 1920s and came from the French m'aidez ('help me'). Currently the feeling we are in crisis has never been stronger. Efforts to manage one's affairs become harder and politicians use double-talk in which often the opposite of what is said is true. The conflict in Ukraine presents a danger while the climate crisis is a reality. Innovative and diverse, RAG's images reflect our times.

RIVERSIDE ARTISTS GROUP (RAG)

Established in 1986, RAG is an independent group of up to 40 practising artists. It is a diverse, not-for-profit organisation with an exciting and progressive membership who work across all of the fine art disciplines. The most recent group exhibition was in September during the Thames Festival 2022 at Riverside Studios, Hammersmith. Group exhibitions include public workshops led by members and other projects have used social media and internal interactive exhibitions to widen knowledge and expertise. RAG and RAG artists have exhibited nationally and internationally.

WWW.RIVERSIDEARTISTSGROUP.COM

@RIVERSIDEARTISTSGROUP

PARTICIPATING ARTISTS

Mike Abrahams
Susan Bazin
Lynne Beel
Clare Belfield
G Calvert
Grazyna Cydzik
Emma Davis
Brian Deighton
Josie Deighton
Lucille Dweck
Shona Elrick
Chloe Fremantle

Maire Gartland
Sarah Granville
Janey Hagger
Seil Lien
Jane Oldfield
Helen Scalway
Felicity Swan
Celia Toler
Astrite Vula
Greta Wakil
Miles Watson
Stephen Williams